

SPECIFICATIONS: STANDARD ENTRANCE DOORS

GENERAL DESCRIPTION

Work includes furnishing all necessary materials, labor and equipment for the installation of the aluminum entrance doors, door frame and hardware as specified herein.

NOT included: Structural support of the framing system.

PRODUCTS/MATERIALS

Aluminum entrance shall be model (s): Narrow stile 2", Medium Stile 3 11/16" and Wide Stile 5" (Nominal) as manufactured by Ramco (Reliable Architectural Metals Company), Detroit, Michigan. Door and frame sections shall be extruded aluminum AA-6063-T5 alloy with a nominal wall thickness of .125". Glazing and door moldings a minimum of .062". Weather-stripping to be silicone treated plastic pile and glazing gaskets shall be EPDM elastomeric extrusions or vinyl with a fiberglass reinforcement cord to prevent stretching. Weather-stripped insert in top and bottom rail is (optional). .375" high tension, zinc plated steel tie rods run the full width of the top and bottom rails joined together with .250" aluminum reinforcing plates and .375" serrated lock nuts. Narrow Stile doors shall have an adjustable setting block in the top rail.

FINISH HARDWARE

Ramco doors shall be supplied with standard hardware unless otherwise specified. Refer to the finish hardware section of Division 8 for requirements for finish hardware items not specified herein. Glass and glazing shall conform to the requirements specified in section "Glass and Glazing." The architect must specify special hardware for custom doors and entrances. Hardware furnished by others shall be sent to Ramco for application.

FABRICATION

Doors shall be mortised to provide positive interlocking of door rails to door stiles. Assembled with .375" diameter high tension steel plated rod, with .250" reinforced corner plate. Welding is (optional) in corner construction.

FINISHES

All exposed framing surfaces shall be free of scratches and other serious blemishes. Aluminum extrusions shall be given an acid etch, followed by an anodic oxide treatment conforming to the American Architectural Metal Association to obtain a color anodized finish AA-M12C2XA31 class II (clear anodized) or AA-M12C2XA44 class I (dark bronze anodized). Wood grain, black anodize, powder coat, and Kynar finishes are available upon request.

EXECUTION

Entrance doors and framing system shall be installed, glazed, and adjusted by experienced workers in accordance with Ramco's installation instructions and the approved shop drawings.

CLEANING AND PROTECTION

The installer shall prevent the aluminum entrance materials and finish from damage during the installation of the materials. After installation it is the responsibility of the general contractor or owner to prevent damage to the aluminum entrance materials and finish. Ramco assumes no responsibility after pick up or delivery.

NOTE: "Always Service All Ways" is our trade mark and to keep up with today's innovations Ramco reserves the right to change specifications without written notice.



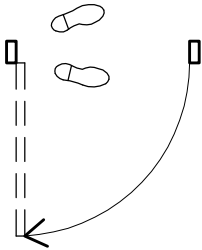
RELIABLE ARCHITECTURAL METALS COMPANY

9751 ERWIN STREET
DETROIT, MI 48213
PH: 800.445.0263 FAX: 313.924.8877

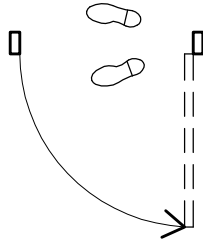
STANDARD ENTRANCES

DETERMINATION OF DOOR SWING / HANDING

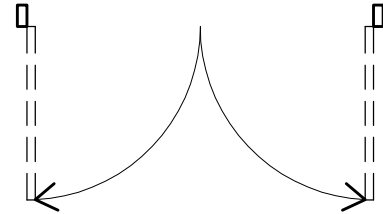
SINGLE SWING
RIGHT HAND (RH)



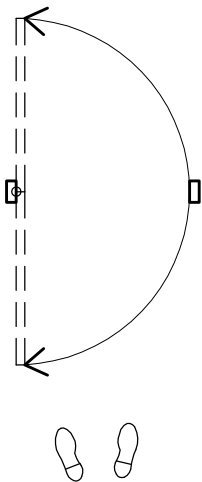
SINGLE SWING
LEFT HAND (LH)



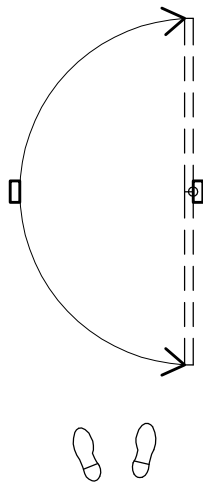
SINGLE SWING
PAIR



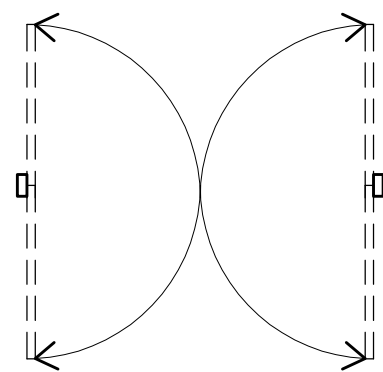
DOUBLE SWING
(HINGE ON THE LEFT)



DOUBLE SWING
(HINGE ON THE RIGHT)



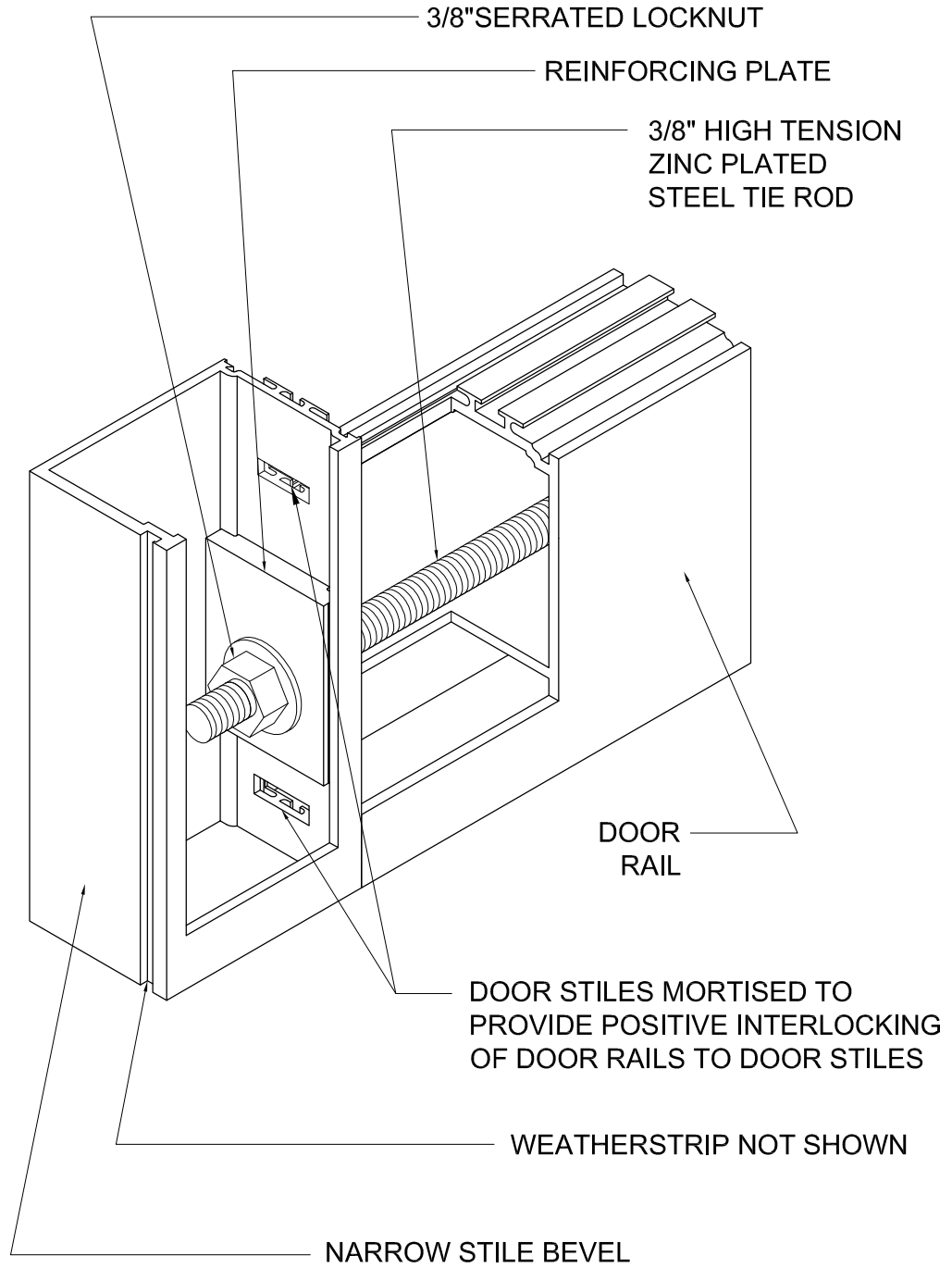
DOUBLE SWING
PAIR





RELIABLE ARCHITECTURAL METALS COMPANY

9751 ERWIN STREET
DETROIT, MI 48213
PH: 800.445.0263 FAX: 313.924.8877



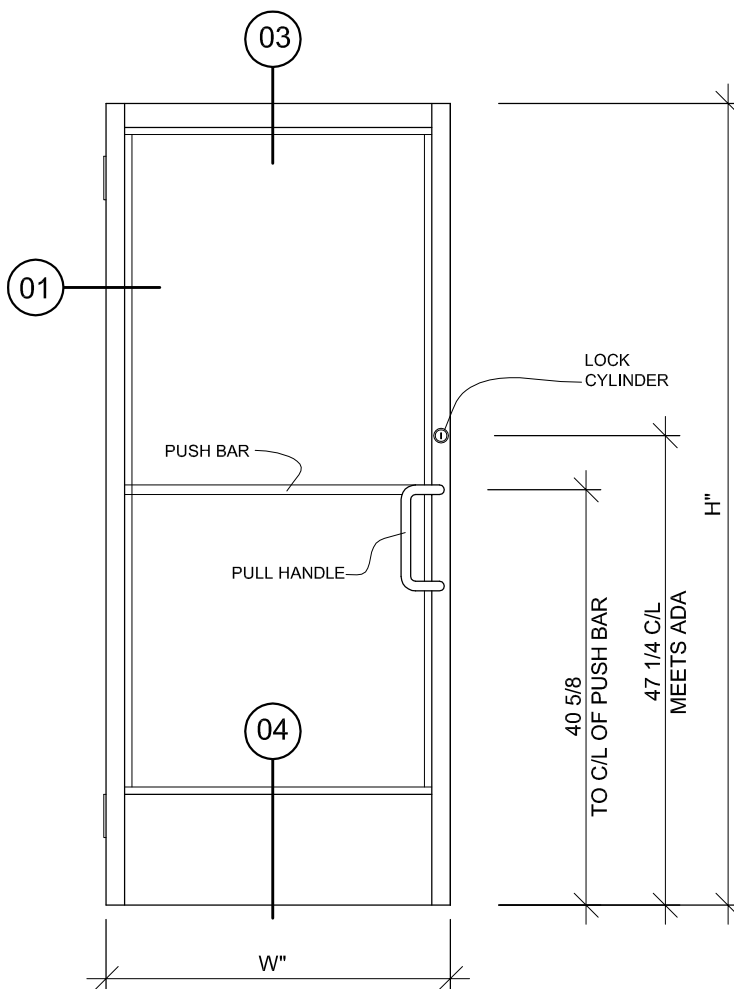
DOOR ASSEMBLY



RELIABLE ARCHITECTURAL METALS COMPANY

9751 ERWIN STREET
 DETROIT, MI 48213
 PH: 800.445.0263 FAX: 313.924.8877

STANDARD ENTRANCES



SINGLE DOOR STANDARD SIZES

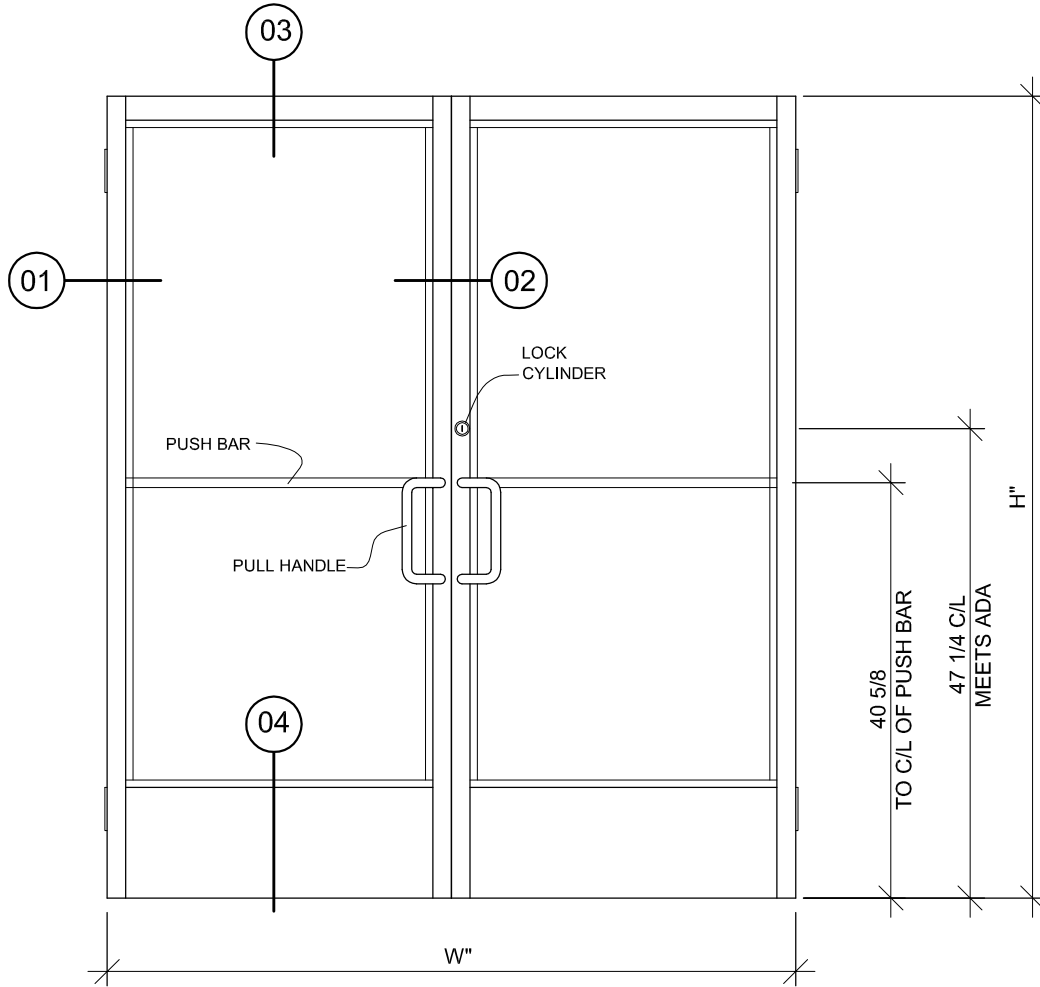
STILE	HANDING	SWING	WIDTH (W)	HEIGHT (H)
NARROW	(LH) OR (RH)	SINGLE OR DOUBLE	36"	84"
NARROW	(LH) OR (RH)	SINGLE OR DOUBLE	42"	84"
MEDIUM	(LH) OR (RH)	SINGLE OR DOUBLE	36"	84"
MEDIUM	(LH) OR (RH)	SINGLE OR DOUBLE	42"	84"
WIDE	(LH) OR (RH)	SINGLE OR DOUBLE	36"	84"
WIDE	(LH) OR (RH)	SINGLE OR DOUBLE	42"	84"



RELIABLE ARCHITECTURAL METALS COMPANY

9751 ERWIN STREET
 DETROIT, MI 48213
 PH: 800.445.0263 FAX: 313.924.8877

STANDARD ENTRANCES



PAIR OF DOORS STANDARD SIZES

STILE	HANDING	SWING	WIDTH (W)	HEIGHT (H)
NARROW	PAIR	SINGLE OR DOUBLE	72"	84"
NARROW	PAIR	SINGLE OR DOUBLE	84"	84"
MEDIUM	PAIR	SINGLE OR DOUBLE	72"	84"
MEDIUM	PAIR	SINGLE OR DOUBLE	84"	84"
WIDE	PAIR	SINGLE OR DOUBLE	72"	84"
WIDE	PAIR	SINGLE OR DOUBLE	84"	84"